


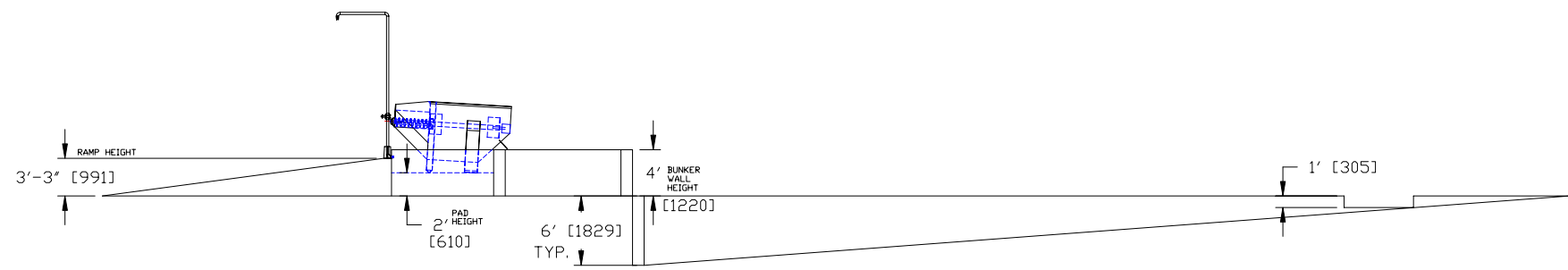
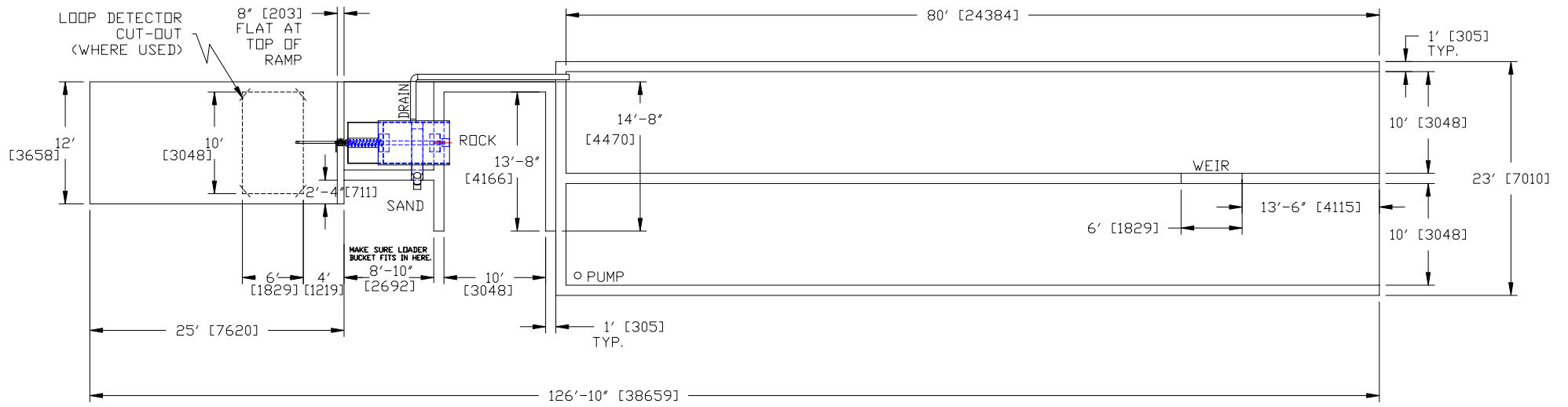
NOTES:

1. ALL DIMENSIONS IN FEET/INCHES [MM].
2. BUNKER AND RAMP WIDTHS SHOWN FOR 8' [2440] WIDE LOADER BUCKET. MAKE SURE LOADER BUCKET FITS BEFORE CONSTRUCTION. IF YOUR BUCKET WIDTH IS DIFFERENT, CONSULT FACTORY FOR PROPER DIMENSIONS.


THIS DRAWING IS CONFIDENTIAL PROPERTY OF BFK TECHNOLOGIES INC. THIS DRAWING AND ITS CONTENTS MAY NOT BE REPRODUCED, PUBLISHED OR DISCLOSED TO ANYONE WITHOUT PRIOR CONSENT OF BFK TECHNOLOGIES INC.

SCALE NONE	 KIEL, WISCONSIN TEL: 920-894-1113 BFK TECHNOLOGIES INC. FAX: 920-894-4991
DRAWN BY FOX	
DATE 26 FEB 09	ENGINEER
	TITLE PROPOSED 4-POND SYSTEM LAY-OUT LEFT-HAND SAND SCREW DISCHARGE MODEL X1 SIX-SHOOTER RECLAIMER
APPROVED BY	DRAWING NUMBER
DATE	30-FIP-041
	REV
	-

REV	ECD	DESCRIPTION	BY	DATE

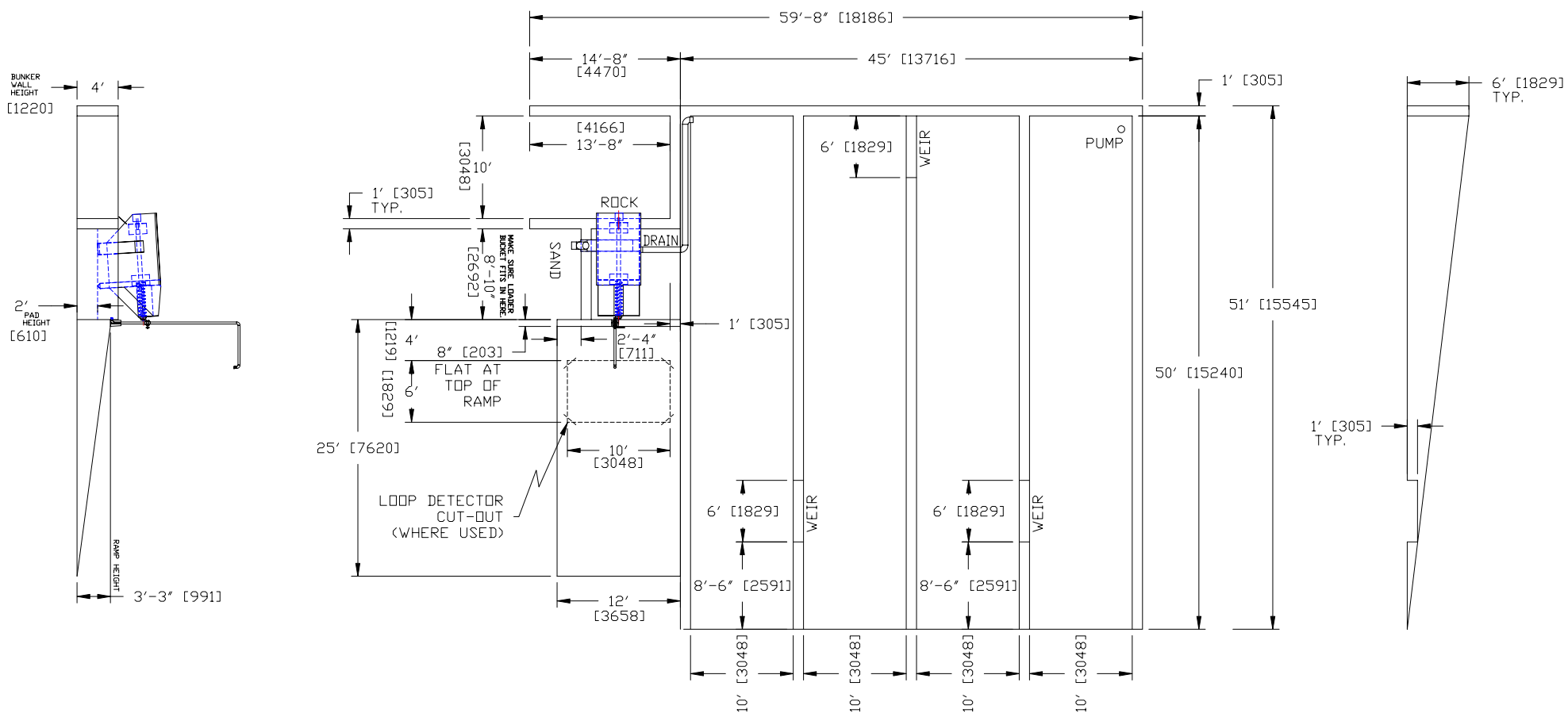


NOTES:
 1. ALL DIMENSIONS IN FEET/INCHES [MM].
 2. BUNKER AND RAMP WIDTHS SHOWN FOR 8' [2440] WIDE LOADER BUCKET. MAKE SURE LOADER BUCKET FITS BEFORE CONSTRUCTION. IF YOUR BUCKET WIDTH IS DIFFERENT, CONSULT FACTORY FOR PROPER DIMENSIONS.

SCALE NONE	 KIEL, WISCONSIN TEL: 920-894-1113 BFK TECHNOLOGIES INC. FAX: 920-894-4991
DRAWN BY FOX	
DATE 26FEB09	ENGINEER
	TITLE PROPOSED 2-POND SYSTEM LAY-OUT LEFT-HAND SAND SCREW DISCHARGE MODEL X1 SIX-SHOOTER RECLAIMER
APPROVED BY	DRAWING NUMBER
DATE	30-FIP-042
	REV
	-


THIS DRAWING IS CONFIDENTIAL PROPERTY OF BFK TECHNOLOGIES INC. THIS DRAWING AND ITS CONTENTS MAY NOT BE REPRODUCED, PUBLISHED OR DISCLOSED TO ANYONE WITHOUT PRIOR CONSENT OF BFK TECHNOLOGIES INC.

REV	ECD	DESCRIPTION	BY	DATE

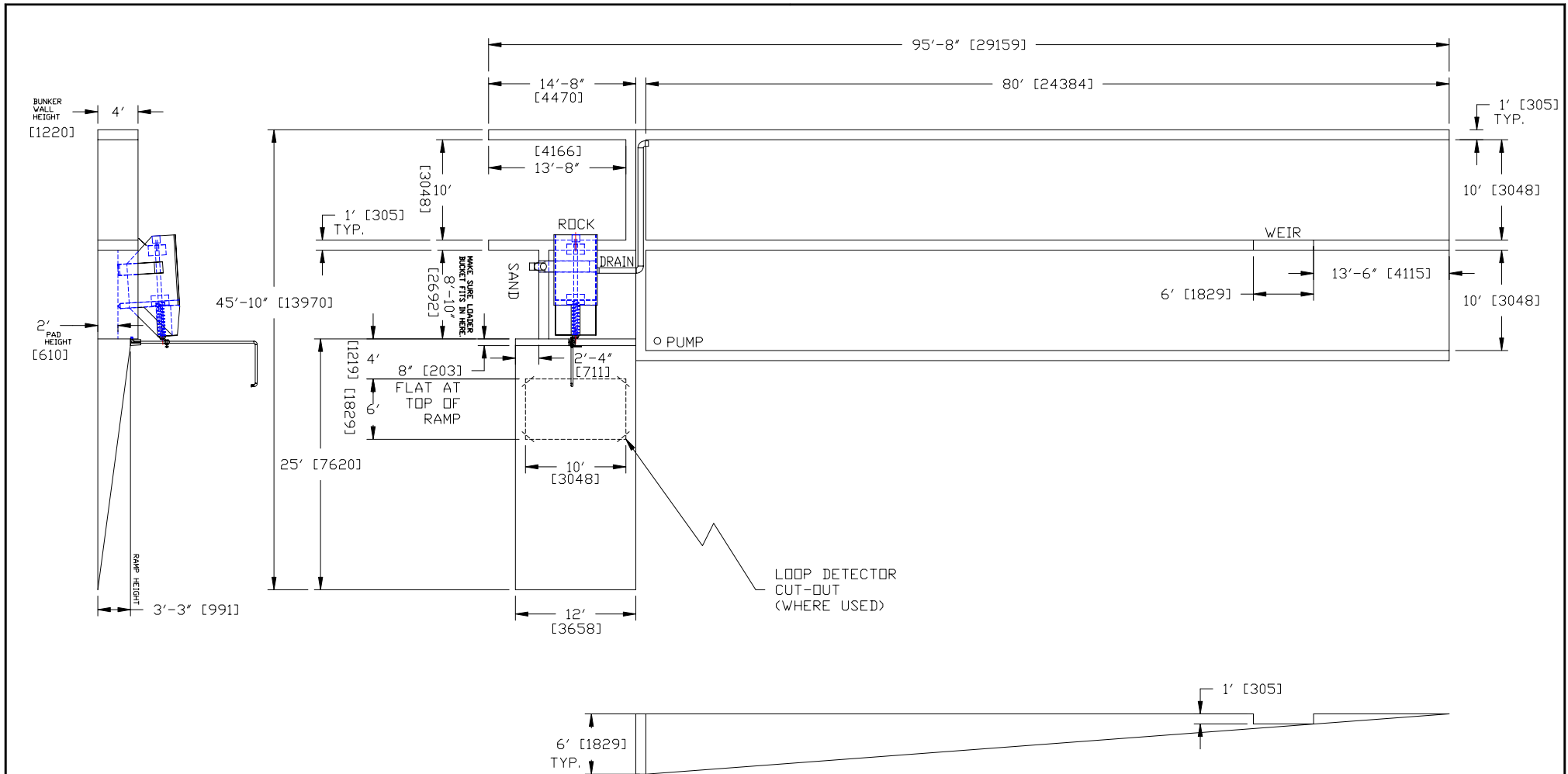


- NOTES:
1. ALL DIMENSIONS IN FEET/INCHES [MM].
 2. BUNKER AND RAMP WIDTHS SHOWN FOR 8' [2440] WIDE LOADER BUCKET. MAKE SURE LOADER BUCKET FITS BEFORE CONSTRUCTION. IF YOUR BUCKET WIDTH IS DIFFERENT, CONSULT FACTORY FOR PROPER DIMENSIONS.

THIS DRAWING IS CONFIDENTIAL PROPERTY OF BFK TECHNOLOGIES INC. THIS DRAWING AND ITS CONTENTS MAY NOT BE REPRODUCED, PUBLISHED OR DISCLOSED TO ANYONE WITHOUT PRIOR CONSENT OF BFK TECHNOLOGIES INC.

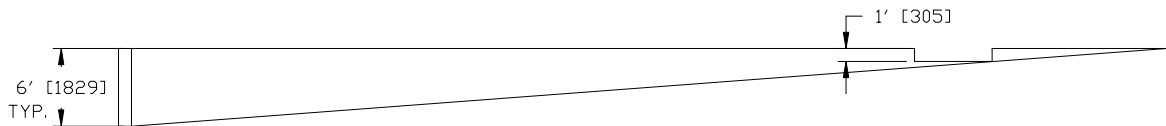
SCALE NONE	 KIEL, WISCONSIN TEL: 920-894-1113 BFK TECHNOLOGIES INC. FAX: 920-894-4991
DRAWN BY FOX	
DATE 26 FEB 09	ENGINEER
	TITLE PROPOSED 4-POND SYSTEM LAY-OUT RIGHT-HAND SAND SCREW DISCHARGE MODEL X1 SIX-SHOOTER RECLAIMER
APPROVED BY	DRAWING NUMBER
DATE	30-FIP-043
	REV
	-

REV	ECD	DESCRIPTION	BY	DATE




NOTES:

1. ALL DIMENSIONS IN FEET/INCHES [MM].
2. BUNKER AND RAMP WIDTHS SHOWN FOR 8' [2440] WIDE LOADER BUCKET. MAKE SURE LOADER BUCKET FITS BEFORE CONSTRUCTION. IF YOUR BUCKET WIDTH IS DIFFERENT, CONSULT FACTORY FOR PROPER DIMENSIONS.



REV	ECD	DESCRIPTION	BY	DATE

THIS DRAWING IS CONFIDENTIAL PROPERTY OF BFK TECHNOLOGIES INC. THIS DRAWING AND ITS CONTENTS MAY NOT BE REPRODUCED, PUBLISHED OR DISCLOSED TO ANYONE WITHOUT PRIOR CONSENT OF BFK TECHNOLOGIES INC.

SCALE NONE	 KIEL, WISCONSIN TEL: 920-894-1113 BFK TECHNOLOGIES INC. FAX: 920-894-4991	
DRAWN BY FOX		
DATE 26 FEB 09	ENGINEER	
DATE	TITLE PROPOSED 2-POND SYSTEM LAY-OUT RIGHT-HAND SAND SCREW DISCHARGE MODEL X1 SIX-SHOOTER RECLAIMER	
APPROVED BY	DRAWING NUMBER	REV
DATE	30-FIP-044	-