
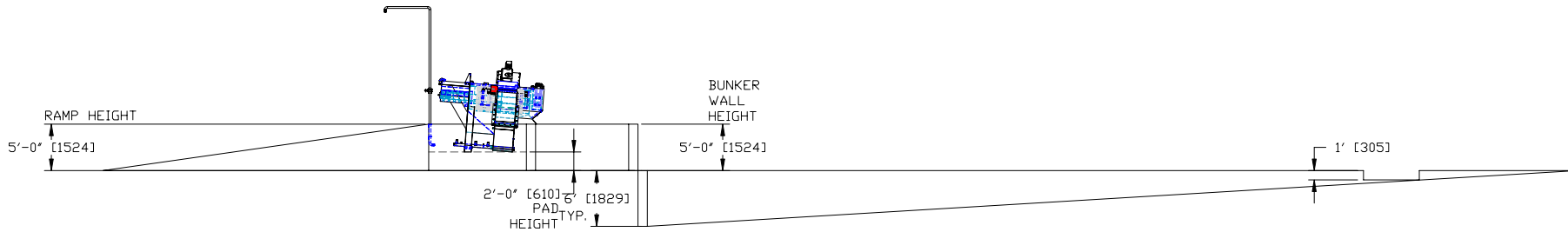
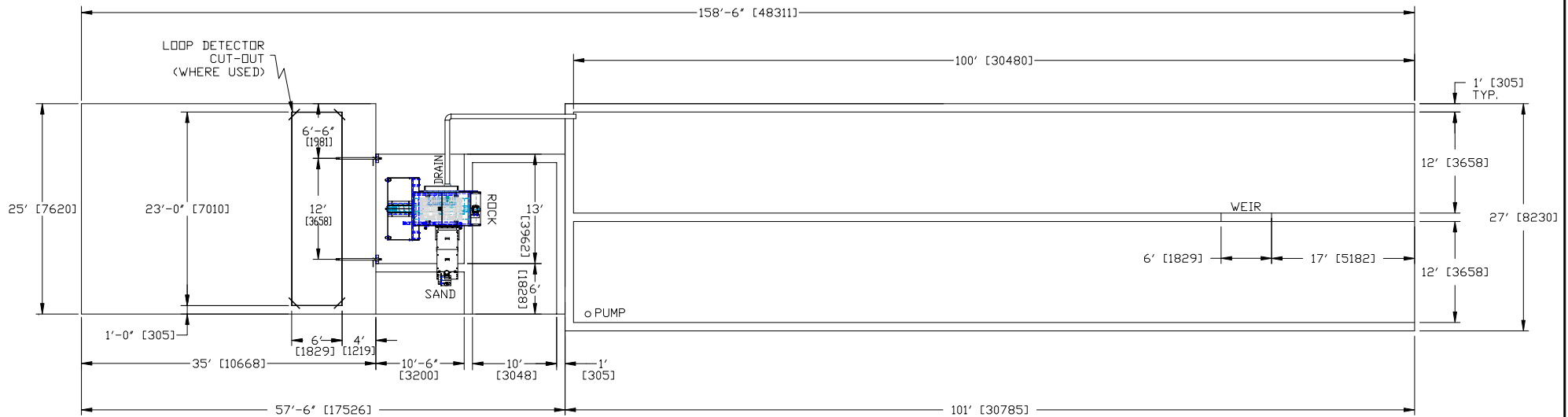


- NOTES:**
1. ALL DIMENSIONS IN FEET/INCHES [MM].
 2. BUNKER AND RAMP WIDTHS SHOWN FOR 10' [3048] WIDE LOADER BUCKET. MAKE SURE LOADER BUCKET FITS BEFORE CONSTRUCTION. IF YOUR BUCKET WIDTH IS DIFFERENT, CONSULT FACTORY FOR PROPER DIMENSIONS.

THIS DRAWING IS CONFIDENTIAL PROPERTY OF BFK TECHNOLOGIES INC. THIS DRAWING AND ITS CONTENTS MAY NOT BE REPRODUCED, PUBLISHED OR DISCLOSED TO ANYONE WITHOUT PRIOR CONSENT OF BFK TECHNOLOGIES INC.

SCALE NONE		KIEL, WISCONSIN TEL: 920-894-1113
DRAWN BY FOX		BFK TECHNOLOGIES INC. FAX: 920-894-4991
DATE 26 FEB 09	ENGINEER	TITLE PROPOSED 4-POND SYSTEM LAY-OUT LEFT-HAND SAND SCREW DISCHARGE MODEL B SNUBNOSE RECLAIMER
APPROVED BY	DRAWING NUMBER 60-FIP-441	REV -

REV	ECD	DESCRIPTION	BY	DATE




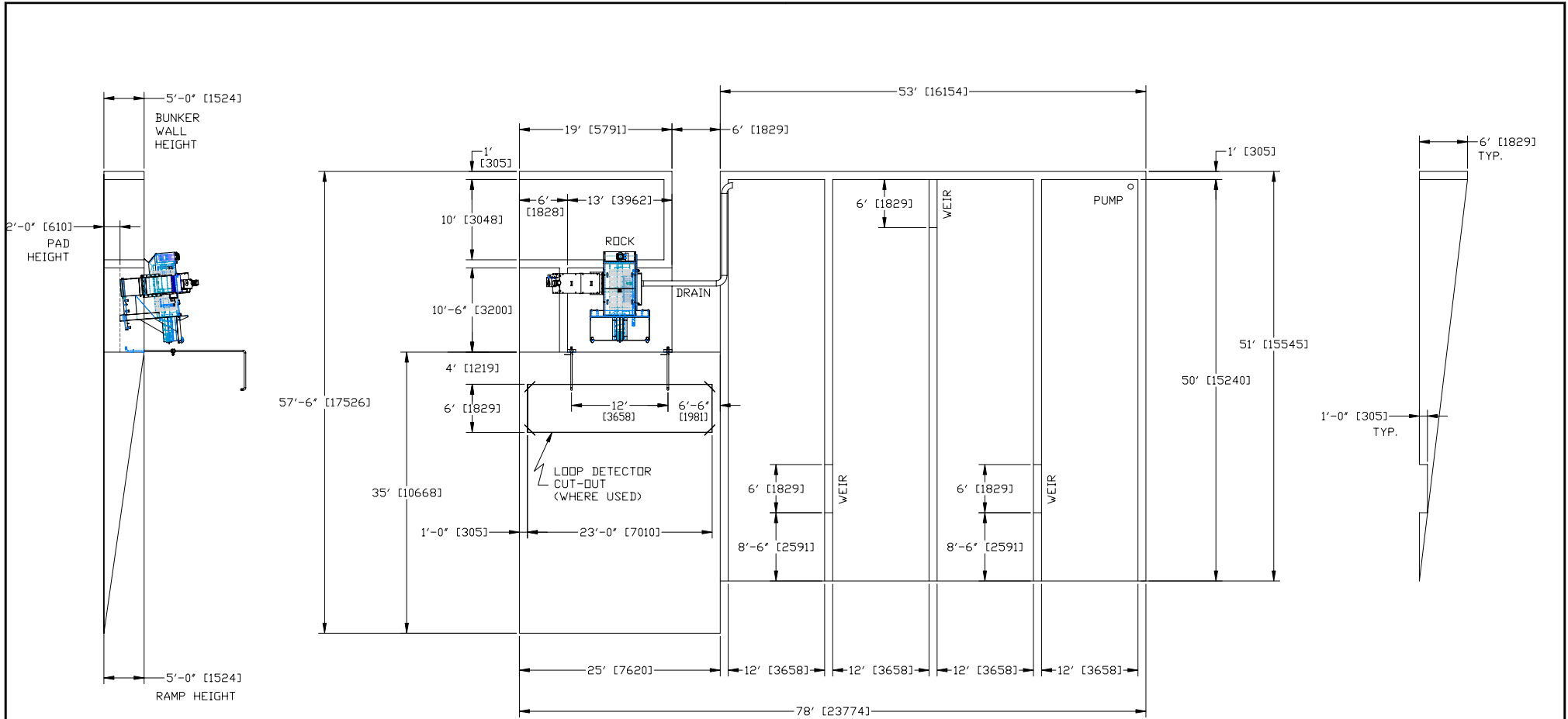
NOTES:

1. ALL DIMENSIONS IN FEET/INCHES [MM].
2. BUNKER AND RAMP WIDTHS SHOWN FOR 10' [3048] WIDE LOADER BUCKET. MAKE SURE LOADER BUCKET FITS BEFORE CONSTRUCTION. IF YOUR BUCKET WIDTH IS DIFFERENT, CONSULT FACTORY FOR PROPER DIMENSIONS.

REV	ECD	DESCRIPTION	BY	DATE
-----	-----	-------------	----	------

THIS DRAWING IS CONFIDENTIAL PROPERTY OF BFK TECHNOLOGIES INC. THIS DRAWING AND ITS CONTENTS MAY NOT BE REPRODUCED, PUBLISHED OR DISCLOSED TO ANYONE WITHOUT PRIOR CONSENT OF BFK TECHNOLOGIES INC.

SCALE NONE	 KIEL, WISCONSIN TEL: 920-894-1113 BFK TECHNOLOGIES INC. FAX: 920-894-4991	
DRAWN BY FOX		
DATE 26FEB09	ENGINEER	
	TITLE PROPOSED 2-POND SYSTEM LAY-OUT LEFT-HAND SAND SCREW DISCHARGE MODEL B SNUBNOSE RECLAIMER	
APPROVED BY	DRAWING NUMBER	REV
DATE	60-FIP-442	-




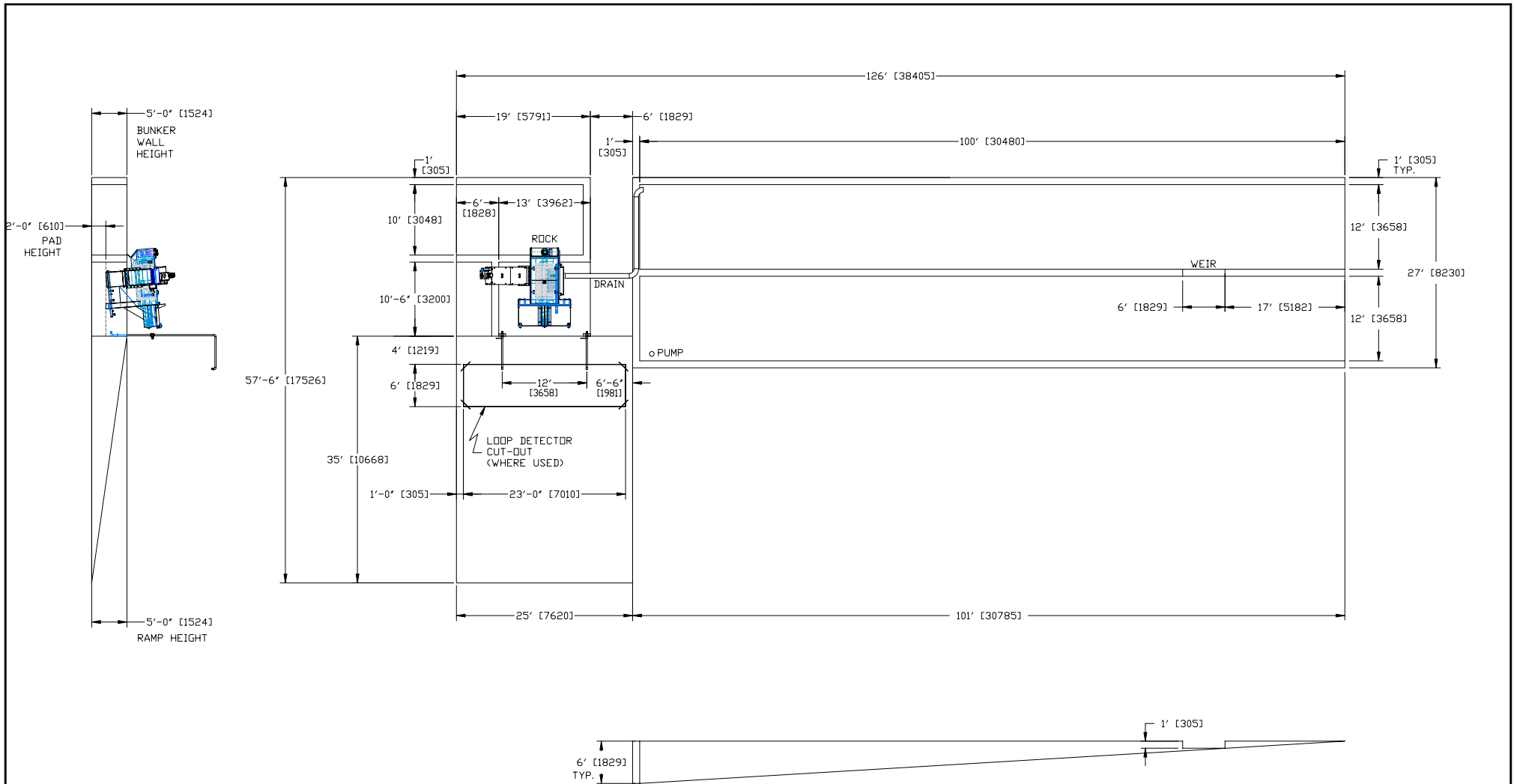
NOTES:

1. ALL DIMENSIONS IN FEET/INCHES (MM).
2. BUNKER AND RAMP WIDTHS SHOWN FOR 10' [3048] WIDE LOADER BUCKET. MAKE SURE LOADER BUCKET FITS BEFORE CONSTRUCTION. IF YOUR BUCKET WIDTH IS DIFFERENT, CONSULT FACTORY FOR PROPER DIMENSIONS.

REV	ECD	DESCRIPTION	BY	DATE

THIS DRAWING IS CONFIDENTIAL PROPERTY OF BFK TECHNOLOGIES INC. THIS DRAWING AND ITS CONTENTS MAY NOT BE REPRODUCED, PUBLISHED OR DISCLOSED TO ANYONE WITHOUT PRIOR CONSENT OF BFK TECHNOLOGIES INC.

SCALE NONE	 KIEL WISCONSIN TEL: 920-894-1113 FAX: 920-894-4991
DRAWN BY FOX	
DATE 09AUG10	BFK TECHNOLOGIES INC.
ENGINEER	TITLE PROPOSED 4-POND SYSTEM LAY-OUT
DATE	RIGHT-HAND SAND SCREW DISCHARGE MODEL 'B' SNUBNOSE RECLAIMER
APPROVED BY	DRAWING NUMBER
DATE	60-FIP-443




NOTES:

1. ALL DIMENSIONS IN FEET/INCHES (MM).
2. BUNKER AND RAMP WIDTHS SHOWN FOR 10' [3048] WIDE LOADER BUCKET. MAKE SURE LOADER BUCKET FITS BEFORE CONSTRUCTION. IF YOUR BUCKET WIDTH IS DIFFERENT, CONSULT FACTORY FOR PROPER DIMENSIONS.

REV	ECD	DESCRIPTION	BY	DATE

THIS DRAWING IS CONFIDENTIAL PROPERTY OF BFK TECHNOLOGIES INC. THIS DRAWING AND ITS CONTENTS MAY NOT BE REPRODUCED, PUBLISHED OR DISCLOSED TO ANYONE WITHOUT PRIOR CONSENT OF BFK TECHNOLOGIES INC.

SCALE NONE	 KIEL, WISCONSIN TEL: 920-894-1113 FAX: 920-894-4991
DRAWN BY FOX	
DATE 09AUG10	BFK TECHNOLOGIES INC.
ENGINEER	TITLE PROPOSED 2-POND SYSTEM LAY-OUT
DATE	RIGHT-HAND SAND SCREW DISCHARGE MODEL 'B' SNUBNOSE RECLAIMER
APPROVED BY	DRAWING NUMBER
DATE	60-FIP-444