

COMPLETE SYSTEM PART No. 11-ABS-101

- *MOUNT CONTROL BOX AS CLOSE AS POSSIBLE TO THE WATER FILL HOSE/NOZZLE ASSEMBLY TO KEEP THE POLY HOSE SHORT.
- *ASSEMBLE WATER FILL HOSE/NOZZLE ASSEMBLY SO IT WILL DRAIN.
- *AFTER INSTALLATION IS COMPLETE, INSERT FILL NOZZLE INTO WATER TANK UNTIL IT HITS THE STOP, TURN ON WATER. IT WILL SHUT OFF AUTOMATICALLY.
- *GROUND PER NATIONAL AND LOCAL CODES.

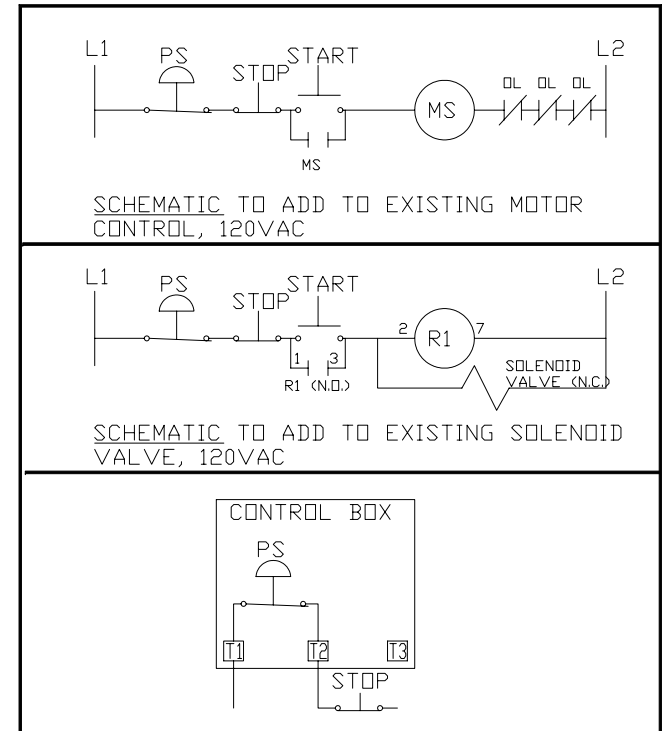
FOR CONNECTION TO EXISTING ON/OFF PUMP CONTROL:


SYSTEM INCLUDES:

- (1) NOZZLE ASSEMBLY
- (20') POLY TUBE, 1/4"
- (1) CONTROL BOX, WITH PRESSURE SWITCH
- (2) HOSE CLAMPS
- (6) CABLE TIES

USERS EXISTING START-STOP STATION MUST INCLUDE MOMENTARY CONTACTS AND HOLDING CONTACTS.

IF A SINGLE PHASE PUMP IS USED WITH 2 WIRE CONTROL, A RELAY MUST BE ADDED WITH A START-STOP STATION.



SCALE NONE	 KIEL WISCONSIN TEL: 920-894-1113 BFK TECHNOLOGIES INC. FAX: 920-894-4991	
DRAWN BY FOX		
DATE 10JULY02	ENGINEER	
DATE	TITLE INSTALLATION, MODEL A WATERDOG CONTROL VALVE EXISTING PUMP/SOLENOID SET-UP	
APPROVED BY	DRAWING NUMBER	REV
DATE	11-A0F-101	A

A		ADDED SOLENOID SCHEMATIC, CHANGE P/N [11FIA001]	FOX	05AUG02	THIS DRAWING IS CONFIDENTIAL PROPERTY OF BFK TECHNOLOGIES INC. THIS DRAWING AND IT'S CONTENTS MAY NOT BE REPRODUCED, PUBLISHED OR DISCLOSED TO ANYONE WITHOUT PRIOR CONSENT OF BFK TECHNOLOGIES INC.
REV	ECD	DESCRIPTION	BY	DATE	