

Models A & B

WATERDOG

Automatic Water Shut-Off

Look familiar?



You know this problem. You see it every day. Drivers overfilling their water tanks, leaving the mess in your yard.

The WATERDOG saves on

- Costly City Water
- Well pump maintenance costs
- Heated winter water
- Chilled summer water

Excess water

- Undermines your pavement
- Creates Ice Hazards
- Tracks dirt out of your yard on wet tires

Solve that problem with the WATERDOG Automatic Shut-off from BFK Technologies.

It's the answer to your costly overflow problems.

With more and more environmental issues facing you, doesn't it make sense to conserve your fresh water, and help minimize run-off?

And think of the expense. Wasted city water is paid for by the gallon. Wasted well water adds costs due to excess wear and tear on pumps and plumbing, causing premature failure and added maintenance costs.

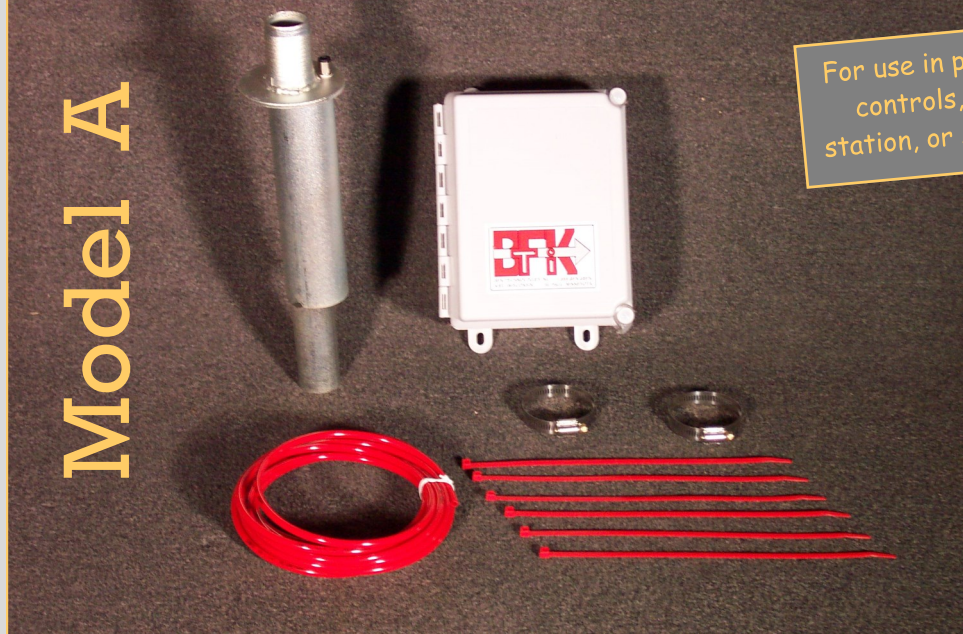


WARNING: Cancer and Reproductive Harm—
www.P65Warnings.ca.gov.

BFK TECHNOLOGIES INC.
CONCRETE RECLAMATION SYSTEMS



Model A



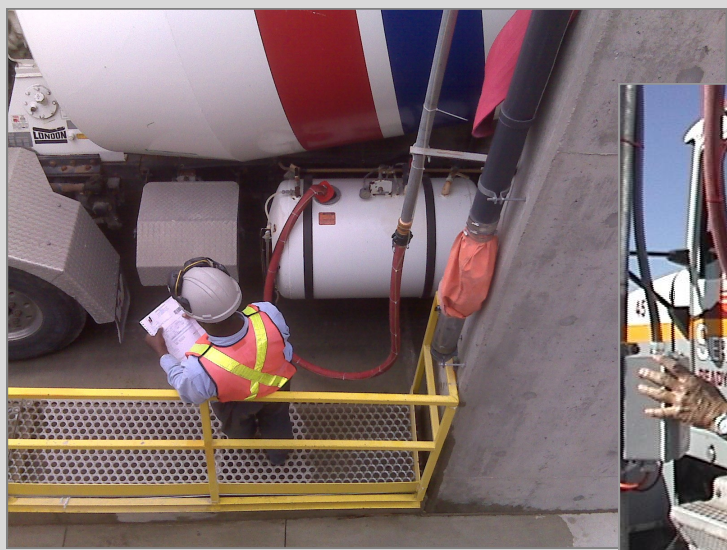
For use in plants with existing electrical controls, such as a pump start/stop station, or solenoid on/off (Well Water).

Model A includes:

- (1) Nozzle, 1-1/4" or 2", zinc and clear plated.
- (1) Model A Control Box, in NEMA 4X Enclosure, complete with pressure switch and terminal strip, 120VAC.
- (1) 20' length air line, 1/4"
- (6) Cable ties

Approx. Shipping Weight: 10#

NOTE: Existing start/stop station must include momentary and holding contacts. If a single phase pump is used with 2-wire control, a relay must be added with a start/stop station. Rights reserved to alter specifications without notice.



Model B



For use in plants where no electrical controls currently exist, such as opening/closing a hand (ball) valve (City Water).

Model B includes:

- (1) Nozzle, 1-1/4" or 2", zinc and clear plated.
- (1) Model B Control Box, in NEMA 4X Enclosure, complete with Start/Stop switches, pressure switch, relay and terminal strip, 120VAC.
- (1) 20' length air line, 1/4"
- (6) Cable ties

Approx. Shipping Weight: 10#

Relay Rated 10A @ 120VAC, DPDT
Requires solenoid valve [sold separately]
Rights reserved to alter specifications without notice.

They *Simply* Work!

BFK Technologies Inc.
1113 Park Avenue
Kiel WI 53042 USA

Tel: 920.894.1113
Fax: 920.894.4991
Email: sales@bfktech.com

www.BFKTECH.com
1.888.BFK.8BFK
1.888.235.8235

